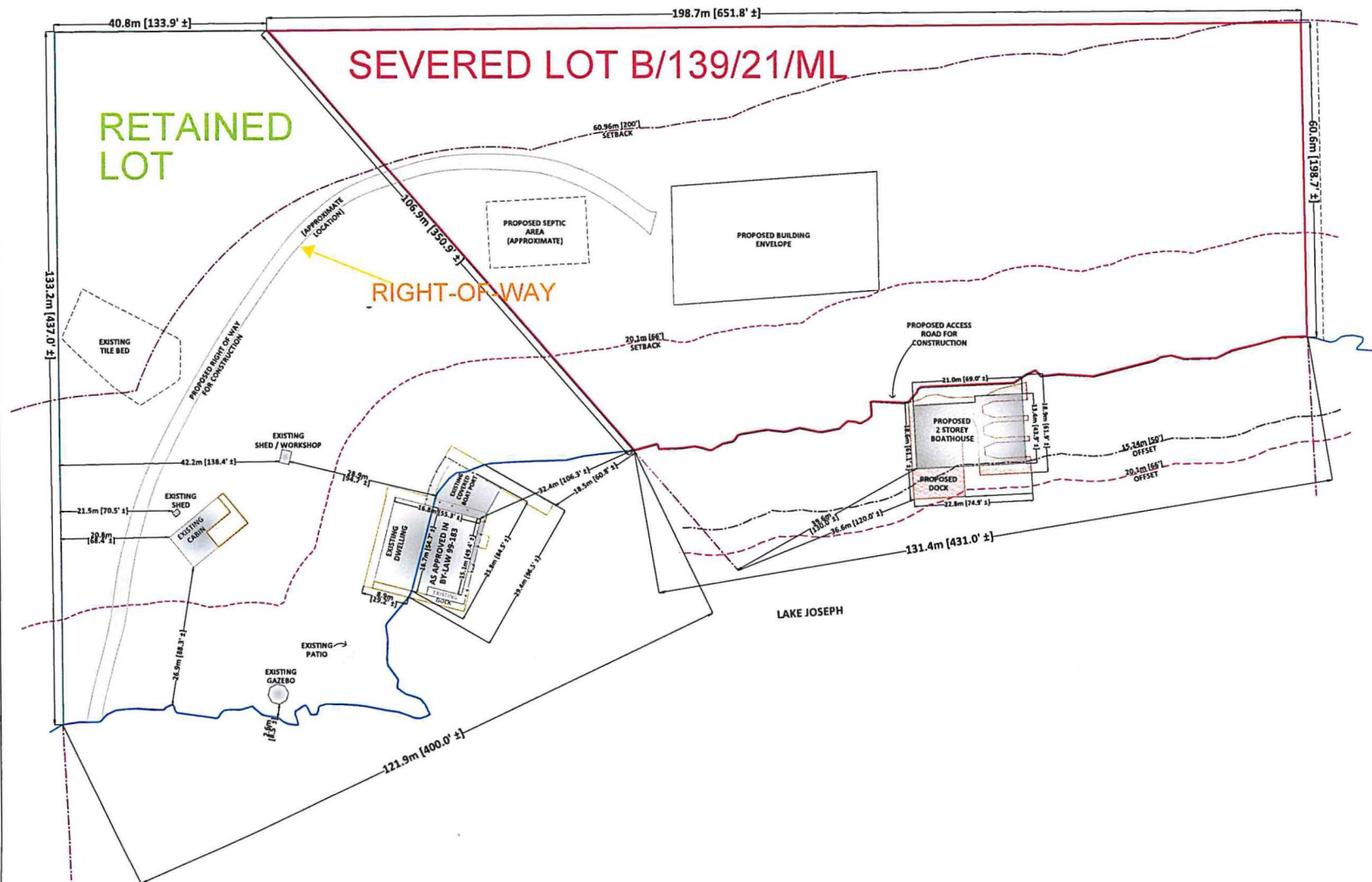


CONSENT SKETCH

NOT TO SCALE



SEVERANCE SKETCH
 22 BADGEROW ISLAND (ISLAND 118)
 GEOGRAPHIC TOWNSHIP OF MEDORA
 TOWNSHIP OF MUSKOKA LAKES
 DISTRICT MUNICIPALITY OF MUSKOKA

EXISTING DEVELOPMENT [RETAINED LOT]
SHED = 1.3m ² [14.0 ft ²]
CABIN = 68.3m ² [735.4 ft ²]
SHED / WORKSHOP = 4.8m ² [51.5 ft ²]
GAZEBO = 11.2m ² [120.4 ft ²]
DWELLING / COVERED BOAT PORT = 401.5 m ² [4,321.7 ft ²]
PROPOSED DEVELOPMENT [SEVERED LOT]
COTTAGE = 696.8m ² [7,500ft ²] [SUBJECT TO CHANGE]
BOATHOUSE = 268.1 m ² [2,886.0 ft ²] ±

SCALE	PROJECT NO.	DATE INITIATED	BY
1 : 750	139700	NOVEMBER 15, 2021	JT
NO.	DATE	REVISIONS	BY
1.	01-MAR-2022	ADD DIMENSIONS	JT
2.	25-MAY-2022	REVISE LABELS / DWELLING	JT
3.			
4.			